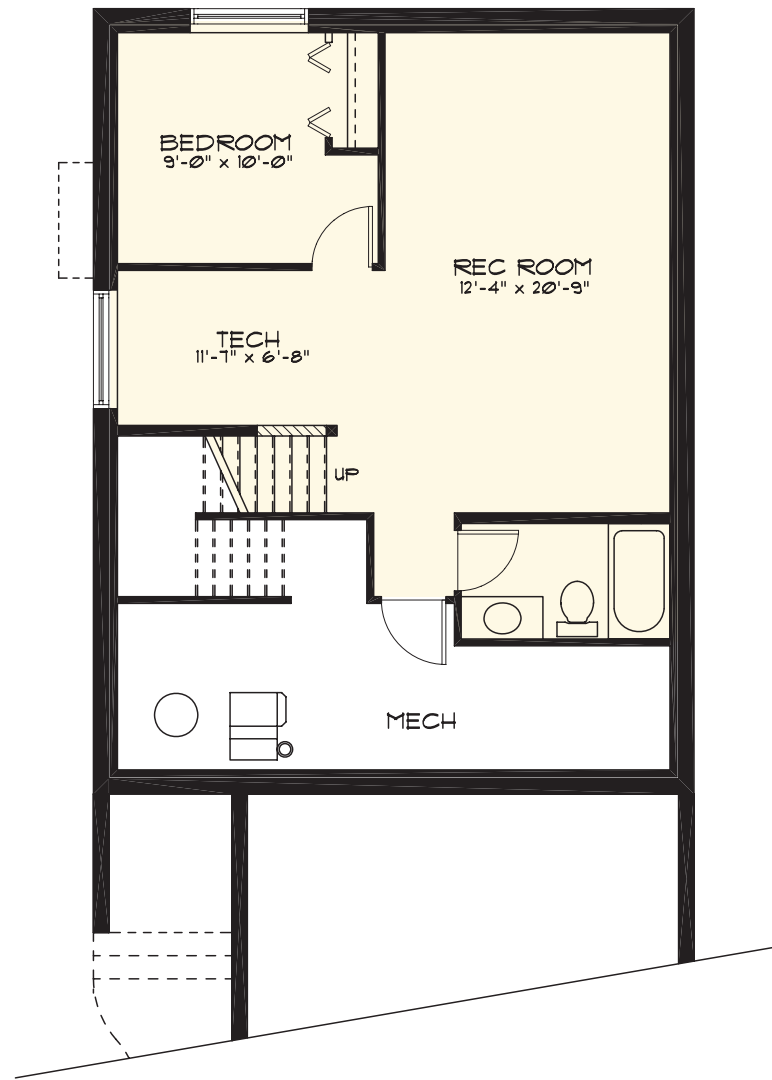


Three and a half bathrooms, 4 bedrooms and more living space to finish as you see fit, is what you get with our finished basement option.

Windham - 1918 Sq.Ft.



**OPTION #2**  
LOWER LEVEL DEVELOPMENT  
526 Sq. Ft. DEVELOPED



CLASSICAL



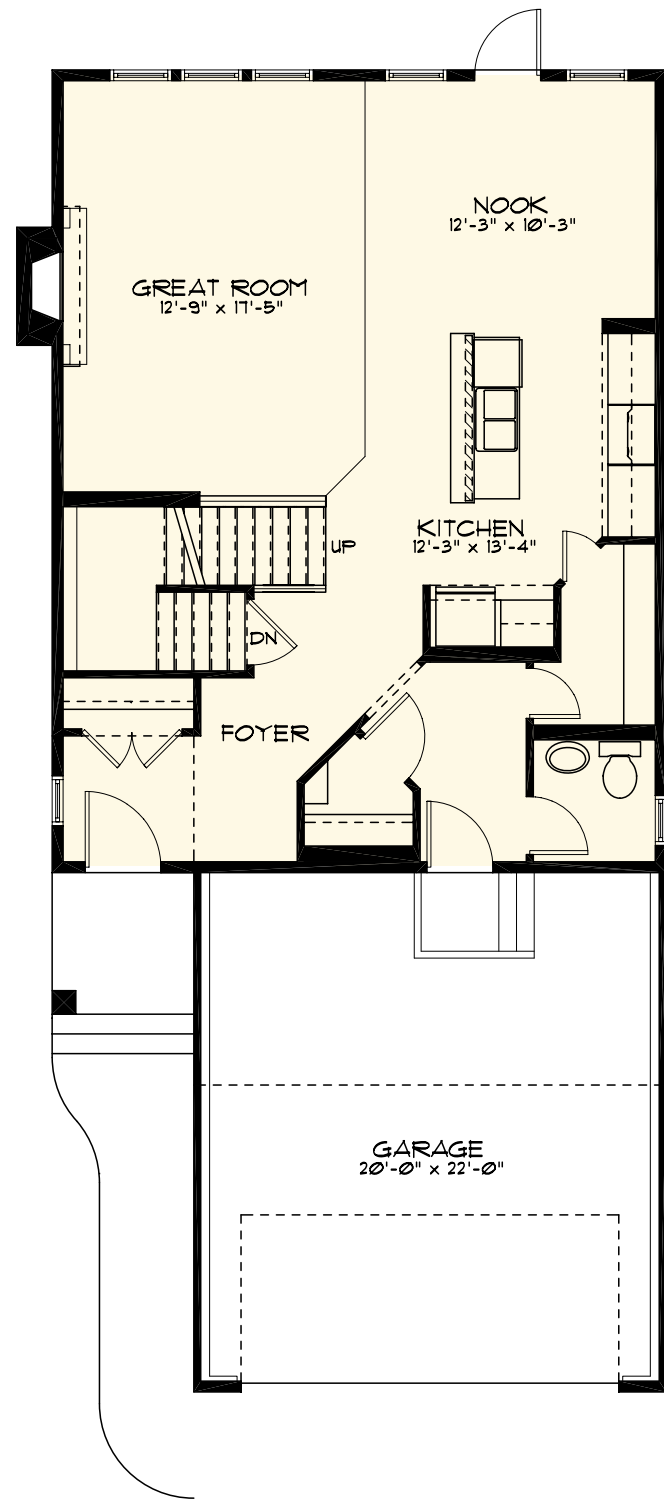
HERITAGE



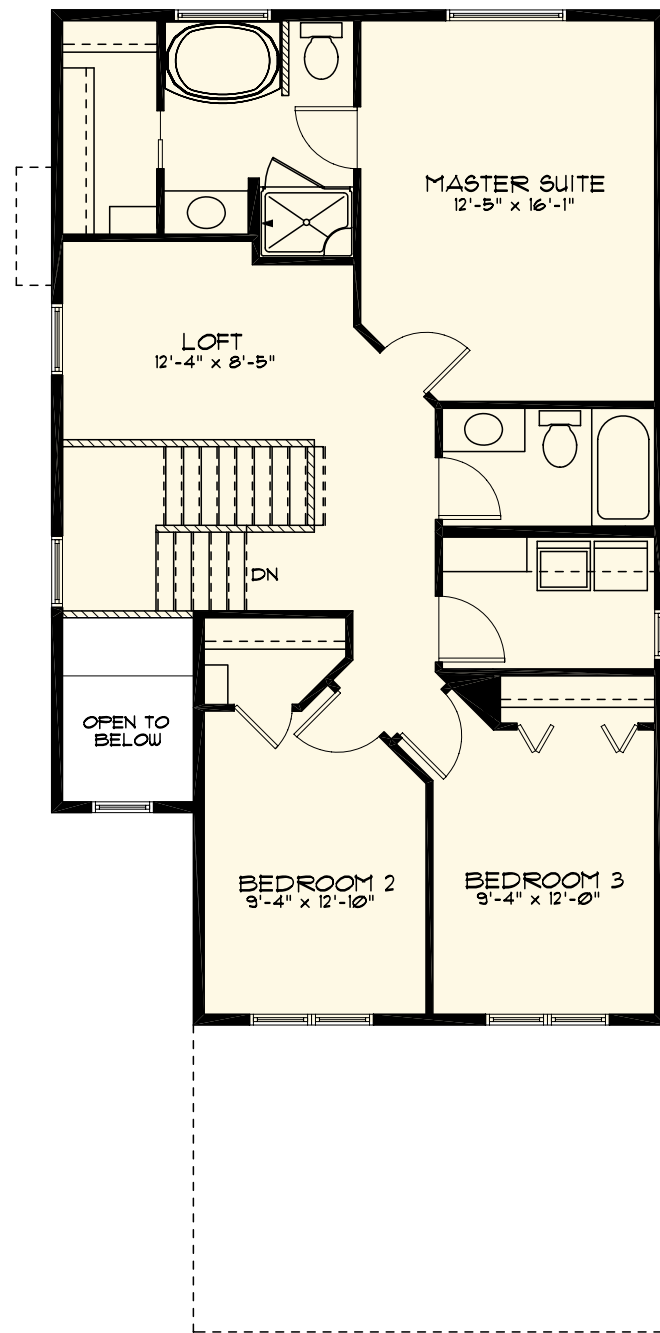
URBAN



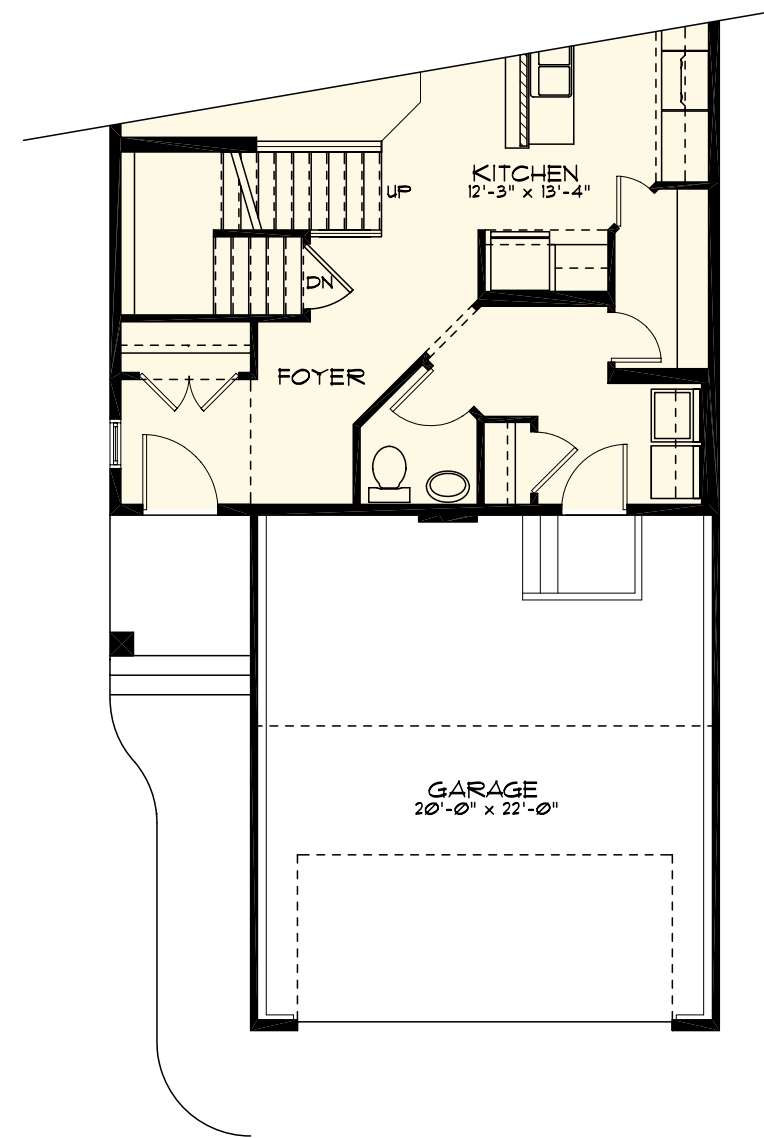
The Windham offers a well designed open main floor plan, which allows for a great entertaining and living space. The upper floor maximizes every square foot, providing three big bedrooms and a functional loft area to use however you see fit.



**MAIN FLOOR STANDARD**  
884 Sq. Ft.



**UPPER FLOOR STANDARD**  
1034 Sq. Ft.



**OPTION #1**  
REAR BONUS ROOM W. MAIN FLOOR LAUNDRY

